

ROUND BY SQUARE PORT KNIFE GATE VALVE

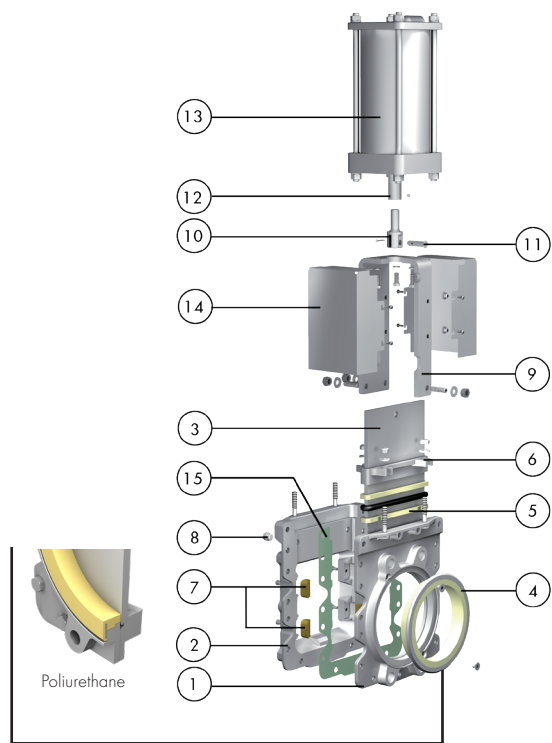
The CR model knife gate is a wafer valve designed for the use in difficult applications. This valve is generally suitable for recycling applications, such as junk or sand traps of pulpers, high density cleaners (HDC) or as silo outlet with solid material. The two piece body with round inlet and square outlet (larger than the inlet) ensures non-jamming.

Product description

- Uni-directional wafer type knife gate valve
- Size range of DN100-600 (larger sizes upon request). See Dimension Charts for pressure rating
- Standard flange connection: EN 1092 PN10 and ASME B16.5 (class 150) (on valve inlet only). Others upon request
- Square-to-round transition pieces on the outlet available
- Double-acting pneumatic actuation
- For EU Directives and other Certificates, please see the document: Directives and Certificates Compliance - Knife Gate Valves - Catalogues and Datasheets

Features

- Internally machined two-part bolted cast body with internal replaceable gate guides for smoother gate traveling
- The square outlet prevents the build-up of contaminants such as staples, wires, etc
- Duplex stainless steel gate, oversized thickness and polished on both sides, increases its wearing resistance and prevents damage to the seat. This design also allows to perfectly cut through the fluid
- Easily replaceable high resistant long-lasting polyurethane seat with stainless steel core or bronze seat
- Long-life multiple graphite impreg. PTFE/aramid yarn combination with elastomeric core and EPDM o-ring, packing with easy access and adjustable gland follower. Wide range of materials available
- RAL-5015 blue epoxy-coating on all cast iron/carbon steel components
- Automated valves provided with gate guards in accordance with EU Safety Standards
- Other options: vortex breakers on seating ring, special materials, fabricated valves, etc.
- Actuation accessories: limit & proximity switches, mechanical stops, positioners, solenoid valves, manual overrides, locking devices and fail safe systems



STANDARD PARTS LIST

Part		Description
1	Body	EN-GJL250 / CF8M ¹
2	Body	EN-GJL250 / CF8M ¹
3	Gate	2205 (1.4462)
4	Sleeve	Polyurethane rubber
5	Packing	Dynapack (Graphite impregnated PTFE and Aramid yarn combination with an elastomeric core)
6	Gland follower	CF8M
7	Sliders	Bronze
8	Cap ²	Galv. Steel / AISI 316 ¹
9	Yoke	Carbon steel / AISI 304 ¹
10	Clevis	17-4 PH
11	Pin	AISI 304
12	Piston rod	AISI 304
13	Cylinder	Aluminium
14	Gate guards	AISI 304
15	Gasket	Aramid fibres

¹ Stainless steel configuration
² Not available for DN 100

Double Acting Pneumatic Cylinder

DN	Pressures	A	H	B	ØC	Connect.	Weight (kg.)
100	7 bar	52	569	115	97	1/4"G	35
150	7 bar	60	708	140	146	1/4"G	78
200	7 bar	60	872	175	194	3/8"G	89
250	7 bar	69	1054	220	247	3/8"G	100
300	7 bar	78	1194	220	298	3/8"G	145
400	7 bar	89	1565	277	398	3/8"G	268
500	4 bar	114	1855	382	479	1/2"G	370
600	4 bar	114	2115	382	578	1/2"G	507

